



SOHORAID MR2-B31BP-B/BA31BP-B

Hardware RAID Storage, Supports Two 2.5" SATA III Hard Disks or SSDs
Selectable Powered by USB Bus-powered or Direct Current (DC)

MR2-B31BP-B/MR2-BA31BP-B hardware RAID storage, built-in high-speed USB 3.2 Gen 2 transmission interface, and provide USB 3.2 Gen 2 Type-C to Type-C cable, suitable for Mac and PC Operating platform.

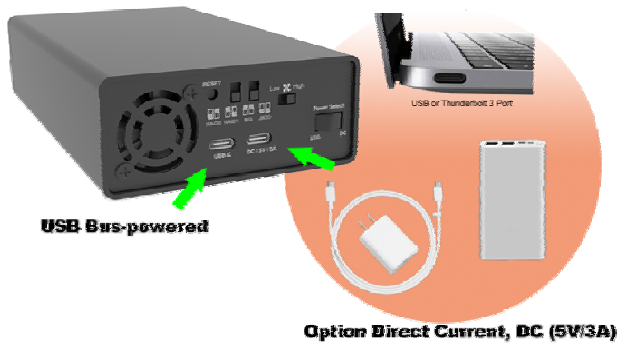
With the MR2's built in hardware RAID controller chipset and USB 3.2 Gen 2 host interface, it not only promise high transmission speed, but also eliminates the cross-platform usage issues. With hardware RAID, all data is computed and processed by the built-in CPU. With such advantages, your computer performance can be focused on running the software and work, instead of handling the storage device's transmission issues.

Features

1. Hardware RAID Storage.
2. Selectable powered by USB Bus-powered or Direct Current (DC).
3. Supports RAID 0/1/JBOD/BIG.
4. Support USB and Thunderbolt™ 3 Type-C host interface
5. Hot-swappable disk tray with lock
6. LED Indicator for Disk Status Display.
7. Low noise Fan, with manual fan speed control switch.
8. Durable Aluminum structure design with silent fan for excellent heat dissipation.

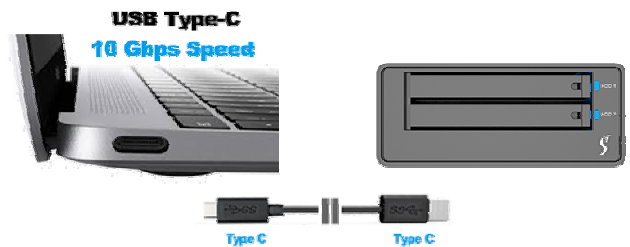
Selectable Powered by USB Bus-powered or Direct Current (DC).

MR2 provides two power input methods: USB Bus-powered and Direct Current (DC). Users can adjust the power input method according to own needs.



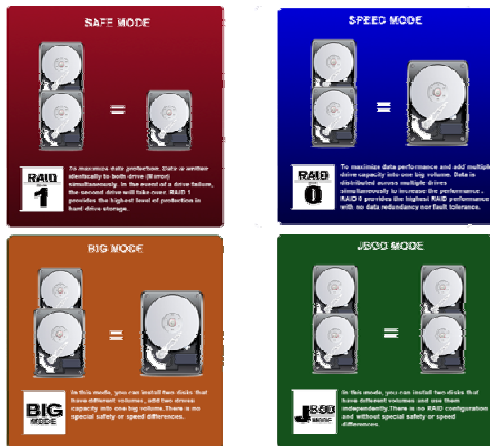
Supports USB and Thunderbolt™ 3 Type-C Host Interface

MR2 is equipped with RAID controller and supports the host computers with USB Type-C and Thunderbolt™ 3 (USB-C), it compatible with all USB 3.2 Gen 1,2/2.0 specifications.



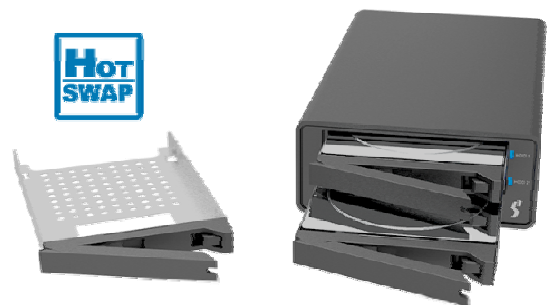
Supports Four RAID Modes

The MR2 has four built-in configuration modes: RAID 1 (Safe Mode), RAID 0 (Speed Mode), JBOD (Two Independent Volumes), and BIG Mode for you to choose according to your needs.

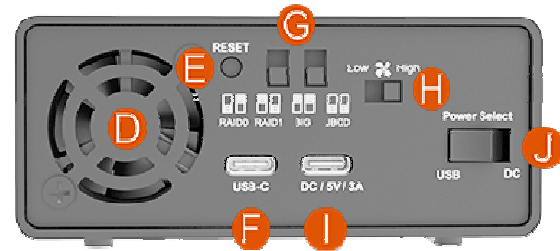


Hot-swappable Disk Tray

MR2 is equipped with two easy-to-install hard drive screw-less trays, that can support any kinds of 2.5" SATA HDD/SSD. Since this new easy-to-use Tray is dimensional compliant to all our Stardom products, you could easily transfer your data among different storage devices.



Product appearance description and specifications



- A. HDD access light
- B. HDD enclosure pin release
- C. HDD enclosure handle
- D. Fan
- E. RESET hole

- F. USB 3.1 Gen2 Type-C (10Gbps)
- G. RAID switch
- H. Fan speed switch
- I. USB Type-C for Power Input (Power Input only), DC /5V/ 3A
- J. Power Select

Interface	1 x USB 3.2 Gen2 Type-C
Compatible Disk	2 x 2.5" SATA HDD/SSD (Under 9.5mm height)
Certification	CE / FCC
RAID Modes	RAID 1 / RAID 0 / JBOD / BIG
Operating System	Windows 7 or later, macOS 10.10 or later, Linux
Cooling System	1 x 3cm Low noise fan
Electrical and Operating Requirements	<ul style="list-style-type: none"> * Line voltage: 100-240V AC * Frequency: 50Hz to 60Hz, single phase * Maximum continuous power: 15W Selectable powered by USB Bus-powered or Direct Current (DC) * Operating temperature: 32° to 104° F (0° to 40° C) * Storage temperature: -4° to 116° F (-20° to 47° C) * Relative humidity: 5% to 95% non-condensing
Dimension	Height: 41 mm Width: 97 mm Depth: 165.3 mm
Product Code	MR2-B31BP-B EAN: 4713227441476 UPC: 884826506034 MR2-BA31BP-B EAN: 4713227441667 UPC: 884826506225
Carton	10pcs per carton
Package Accessories	<ul style="list-style-type: none"> * 1 x MR2-B31BP-B or MR2-BA31BP-B (with two disk tray) * 1 x USB 3.2 Gen 2 Type-C to C Cable * 1 x USB 3.2 Gen 2 Type-C to A Cable (MR2-BA31BP-B Only) * Accessory Kit * 1 x Quick Installation Guide